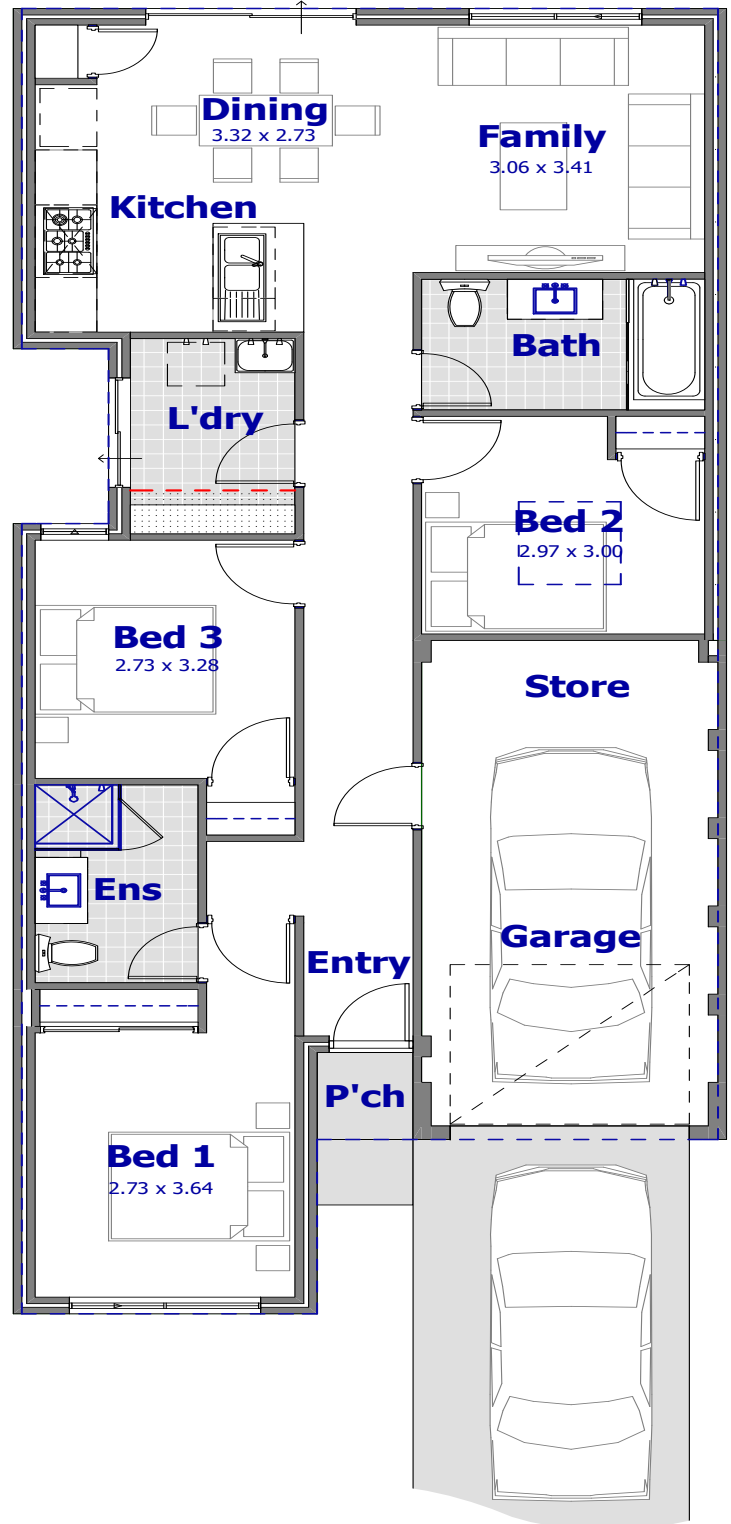




# THE MEARS

## 7.5M PLATINUM RANGE



### UNIQUE INCLUSIONS:

- 3 BEDROOM & 2 BATHROOM
- 3 CHOICES OF ELEVATION WITH RENDERED FACADE
- COLORBOND ROOF
- SPACIOUS OPEN PLAN LIVING
- GARAGE WITH CONCRETE HARDSTAND AND REMOTE CONTROLLED SECTIONAL DOOR AS PER PLAN
- GOURMET KITCHEN WITH STAINLESS STEEL APPLIANCES
- BUILT IN ROBES AND LINEN CUPBOARD
- SPACIOUS MASTER BEDROOM WITH FULLY APPOINTED ENSUITE AND WALK-IN ROBE
- QUALITY FLOOR COVERINGS THROUGHOUT
- PAVING TO ENTERTAINING AREA, DRIVEWAY, PORCH AND PATH TO FRONT DOOR
- VERTICAL BLINDS THROUGHOUT (EXCLUDING WET AREAS)
- SHOWER SCREENS



WOW GROUP (WA) PTY LTD

# PLATINUM SERIES SPECIFICATIONS

## CUSTOMER COMFORT

- HIA fixed price contract
- Home indemnity insurance
- 6 month maintenance period
- Full contour survey and standard engineer's report to block
- Engineer approved structural certification
- Hard wired smoke detectors
- Standard application fees to relevant authorities included
- Approved R4.0 insulation batts

## EXTERNAL FEATURES

- Double clay brick construction
- Single key access
- Colorbond roof
- Colorbond gutters, fascias & downpipes
- 25 degree roof pitch
- 2c face brickwork
- Cream mortar with rolled joints
- Quality vent lock windows & sliding doors
- Flyscreens to all sliding doors & windows (where applicable)
- 2 x external garden taps
- Double garage
- Natural grey concrete hardstand to garage
- Remote sectional door to garage with 3 x remotes
- Fibre cement ceiling to garage
- Feature front entry door from builder's standard range
- Paved courtyard/alfresco, front entry path, porch/ verandah (if applicable) and driveway up to 6m from builder's standard range
- Energy efficient hot water system
- 3 x external lights
- Treated blue pine roof structure

## KITCHEN FEATURES

- 900mm wide stainless steel electric fan forced oven with 900mm gas cooktop from builder's standard range
- Square edge benchtops
- 4 x shelves to pantry
- Stainless steel double bowl, single drainer sink with flickmixer tap
- ABS edging & soft closing hinges to all cabinet doors & drawers
- Designer tiles to kitchen splashback & returns 200mm high

## ENSUITE, BATHROOM & LAUNDRY FEATURES

- Choice of designer china basin to ensuite
- Impressive tile selections to wet areas
- 1 x handheld shower on a rail to ensuite from builders standard range
- 2m high wall tiling to ensuite & bathroom shower recess
- Slimline mirrors to ensuite & bathroom vanities
- Floor & skirting tiling to ensuite, bathroom, laundry & W/C from builder's standard range
- Toilet roll holders to W/Cs
- Towel rails to ensuite & bathroom
- 45L trough with white metal cabinet to laundry
- 2 x rows of wall tiling to laundry trough splashback
- Chrome floor wastes
- Designer bath tub
- Choice of designer tapware or mixers

## WHY BUZZ HOMES?

- Colorbond gutters, fascias & downpipes
- 26L instantaneous hot water system
- Ample lights & double power points throughout Home
- Soft closing hinges to cabinet doors & drawers
- Double bowl, single drainer sink to kitchen
- Fan forced oven to kitchen
- China basins to vanities
- Towel rails to ensuite & bathroom
- Floor tiling to W/C & laundry floors (including skirting)
- Impressive tile selection to wet areas
- Shower screens to ensuite & bathroom shower recesses
- Stainless steel trough to laundry
- 4 x shelves to linen
- Double car garage
- Remote sectional door to garage
- Quality vent lock windows & sliding doors
- 25 degree roof pitch
- Colorbond roof
- Chrome floor wastes to wet areas
- 1 x handheld shower on a rod to ensuite
- 3 external lights
- Paved courtyard/alfresco, front entry path, porch/ verandah (if applicable) and driveway up to 6m from builder's standard range
- Square edge bench tops
- Designer bath tubs
- Slimline mirrors
- Treated blue pine to roof structure
- Engineer approved structural certification
- Choice of designer tapware or mixers
- Feature front entry doors
- Single key access
- 900mm gas cook top
- 900mm electric oven



GIVE US A BUZZ!  
 **9318 6088**  
[www.buzzhomes.com.au](http://www.buzzhomes.com.au)

